

East Lake Village

Shores



Exterior Paint Color Guidelines and Exterior Color Options

EAST LAKE VILLAGE SHORES

EXTERIOR PAINT COLOR GUIDELINES

Paint colors are organized into nine color schemes. In each color scheme there are two to three colors that may be used for stucco or siding, each a variation of the others within the scheme. There are three accent colors, plus white, in each scheme.

In each color scheme, the stucco and siding colors are interchangeable. Any of the two or three colors may be used for stucco or siding. These colors were selected to work together as compliments and provide for a variety of combinations; therefore, homeowners are limited to using only the colors from one scheme (group). The accent colors for each scheme may only be used for window shutters and/or front doors.

Applications for exterior painting are available from the Paint Committee. Color selections are subject to approval by the Paint Committee.

All exterior walls of the home shall be painted in the same color scheme. The party and entry walls may also be painted the same color as the stucco or siding, or white, however the caps of the wall must be white.

As the Shores unifying element, all trim on every home will be white. White may also be used for window shutters, front door and garage doors.

Varnished or painted front doors that are original to the home, including those that have been modified, will be maintained by the Association (in the regular paint cycle) if the homeowner so chooses. Replacement doors shall be maintained by the homeowners. Homeowners may contract directly with the painting contractor should they desire to paint or alter the front door at their own expense.

Wood garage doors shall be painted white only. Vinyl or metal doors should retain their neutral original factory color/finish for easier maintenance. In recent years some replacement doors have been repainted (white only) successfully, please discuss this with the painting contractor at the time they begin working on your home.

Patio covers, gazebos and other building structures on the property shall be painted the same Shores color scheme as the home and at the homeowner's expense.

Absentee homeowners may review the color schemes at the Clubhouse or obtain them from the Paint Committee. Color decisions must be made in a timely manner in accordance with the painting schedule. In order to facilitate the schedule, if a homeowner does not make a color selection, the Paint Committee will choose the color scheme.

Homeowners may paint off-schedule at their own expense. In every case, only the Shores specified paint supplier* and currently adopted colors may be used.

*Vista Paint

Adopted February 2014
Revised 2011, 2013, 2014

EAST LAKE SHORES EXTERIOR PAINT SELECTION

HOMEOWNER: _____

ADDRESS: _____

TELEPHONE: _____ EMAIL: _____

COLOR SCHEME CHOICE

Scheme Number: _____

STUCCO: _____

SIDING: _____

TRIM: Pella White _____

WINDOW SHUTTERS: _____

(Note: If using an accent color, for both the front door and window shutters, the same color must be selected)

FRONT Door: check one below for original doors only.

Painted
Finish

Varnish Finish
to Remain

Strip Varnish and Paint
(1 time fee of \$20)

Select Color _____

Do Not Paint:

GARAGE DOOR:

Original wood door

Replacement door

If door is to be painted select color: _____

Do Not Paint

All stucco party walls will be painted White unless homeowner selects stucco or siding color with white pillar caps

Color Choice: _____

Wrought Iron will be painted by contractors using a special paint

Shores homeowners **must use designated** Vista Paint and approved ELV Shores colors in order to assure the consistent quality of paint and to avoid any problems with warranties from the Association contractors.

HOMEOWNER'S SIGNATURE: _____

DATE: _____

Return form to Tom Moore; 5415 Via Rene or
FAX to: (714) 695-1268
email to: taso4you8@yahoo.com
Call with questions to: (714) 695-9410



EAST LAKE VILLAGE - THE SHORES

EXTERIOR COLOR OPTIONS



PREPARED BY
LISA STRAUSS
714.797.2787

VISTA PAINT – ORANGE LOCATION
2341 N. TUSTIN AVENUE
ORANGE, CA 92865
714.998.4770

Revised February 8, 2012

DISCLAIMER

The color samples presented herein have been scanned from the originals and are provided for informational purposes only.

As a result of the scanning process, the colors represented may reflect variations in intensity and hue from the original samples. They should, however, be of sufficient quality to allow for an initial color selection.

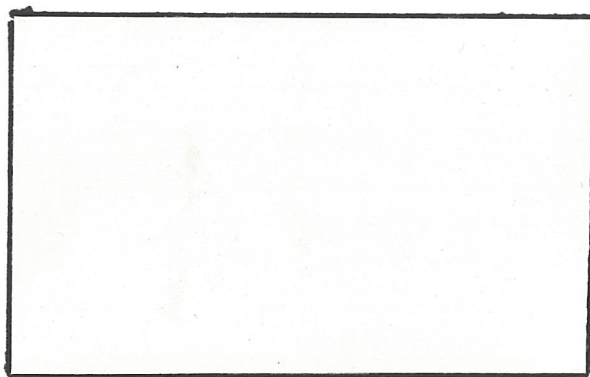
Please verify your selection against the original color guide prior to confirming the color scheme selected for your property



Eastlake Village
The Shores

ALL SCHEMES EXTERIOR COLOR

TRIM:



VISTA PAINT COLOR NO. 14- 22451
FZ. CZ-15- 16770



EAST LAKE VILLAGE - THE SHORES

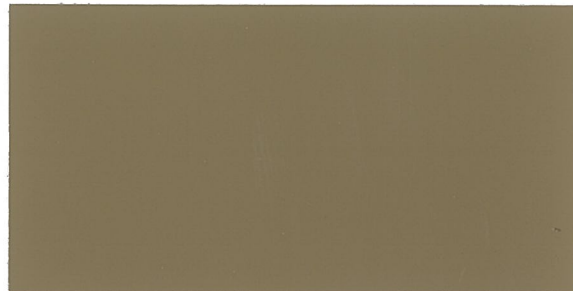
COLOR SCHEME 1

STUCCO:



VISTA PAINT COLOR 72 TOGA

SIDING:



VISTA PAINT COLOR 62 AMBER TAN



VISTA PAINT COLOR 43 SANDPEBBLE



EAST LAKE VILLAGE - THE SHORES

COLOR SCHEME 1 CONTINUED

ACCENT:



VISTA PAINT NO. 27-16546
FZ 554 GARDEN GATE



VISTA PAINT COLOR 05 BLACK
FZ AC144N BLACK DECO



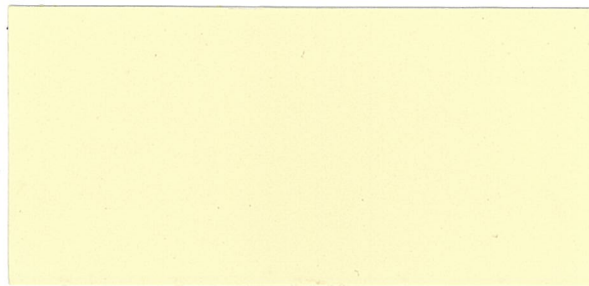
VISTA PAINT NO. 66 SPANISH BROWN



*Eastlake Village
The Shores*

SCHEME 2(A)

STUCCO:



*VISTA PAINT NO. 27-16542
FZ. 7741W SILVERED PECAN*

SIDING:



43 SANDPEBBLE



EAST LAKE VILLAGE - THE SHORES

COLOR SCHEME 2 CONTINUED

ACCENT:



VISTA PAINT NO. 27-16546
FZ 554 GARDEN GATE



VISTA PAINT COLOR 05 BLACK
FZ AC144N BLACK DECO



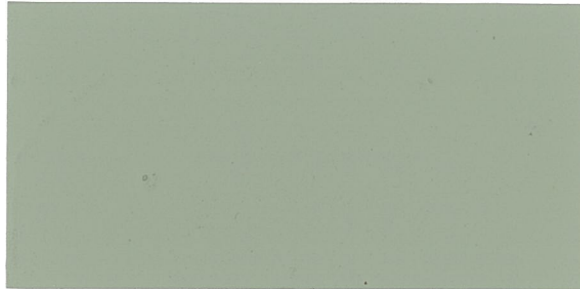
VISTA PAINT NO. 66 SPANISH BROWN



*Eastlake Village
The Shores*

SCHEME 3

STUCCO:



**VISTA PAINT NO. 27- 16539
FZ. 518 OAK MOSS**

SIDING:



**VISTA PAINT NO. 27- 1653~~9~~5
FZ. 8662W JOGGING PATH**



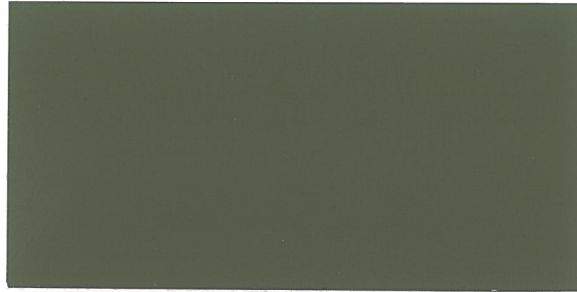
**VISTA PAINT NO. 27- 16534
FZ. 8663W RUGGED TRAIL**



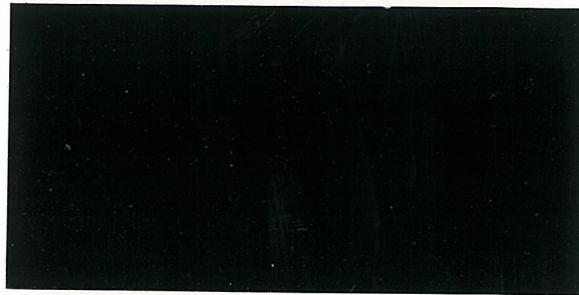
*Eastlake Village
The Shores*

SCHEME 3 CONTINUED

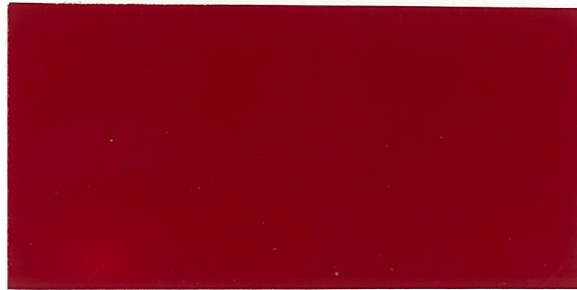
ACCENT:



47 OLIVE BRANCH



*VISTA PAINT COLOR 05 BLACK
FZ. ACI44N BLACK DECO*



*VISTA PAINT NO. 9975
FZ. CZ-15-17610*



*Eastlake Village
The Shores*

SCHEME 4

STUCCO:



**VISTA PAINT NO. 27- 16527
FZ. 8773M DAUPHIN GRAY**

SIDING:



**VISTA PAINT NO. 27- 16532
FZ. 8771W SILVER SHIMMER**



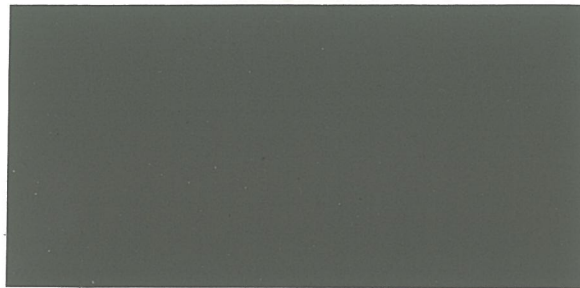
**VISTA PAINT NO. 27- 16530
FZ. 8774M TANKARD**



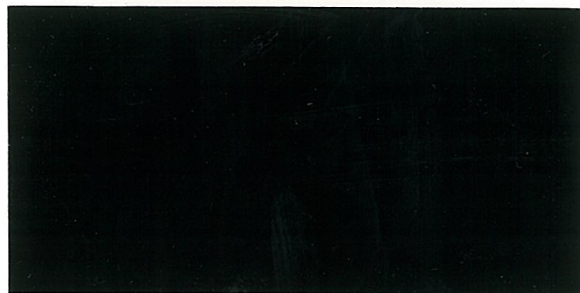
*Eastlake Village
The Shores*

SCHEME 4 CONTINUED

ACCENT:



**VISTA PAINT NO. 14- 22463
FZ. 526 CITADEL**



**VISTA PAINT COLOR 05 BLACK
FZ. AC144N BLACK DECO**



**VISTA PAINT NO. 9975
FZ. CZ-15-17610**



*Eastlake Village
The Shores*

SCHEME 5

STUCCO:



VISTA PAINT NO. 27- 165325
FZ. 8662W JOGGING PATH

SIDING:



VISTA PAINT NO. 27- 16537
FZ. 8660W GRECIAN IVORY



VISTA PAINT NO. 27- 16534
FZ. 8663W RUGGED TRAIL



*Eastlake Village
The Shores*

SCHEME 5 CONTINUED

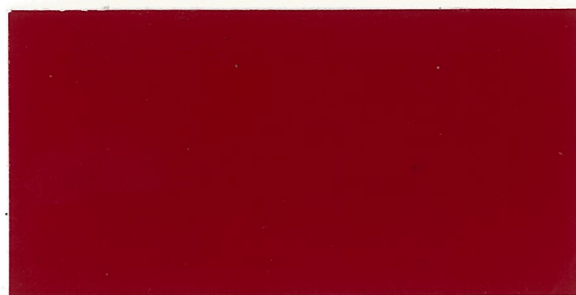
ACCENT:



47 OLIVE BRANCH



**VISTA PAINT COLOR 05 BLACK
FZ. AC144N BLACK DECO**



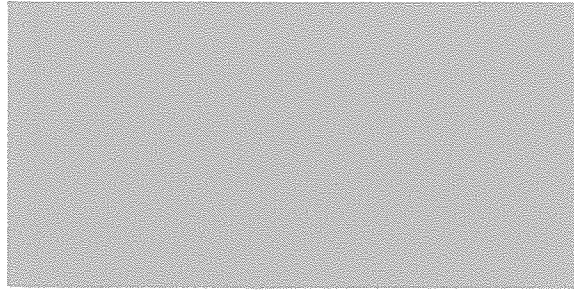
**VISTA PAINT NO. 9975
FZ. CZ-15-17610**



*Eastlake Village
The Shores*

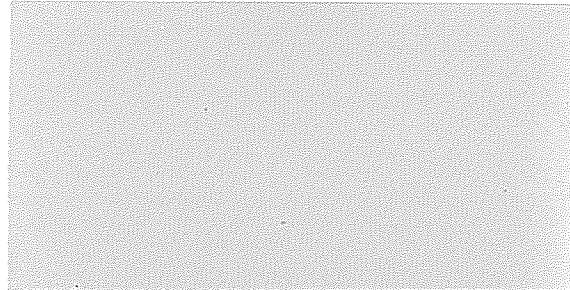
SCHEME 6

STUCCO:

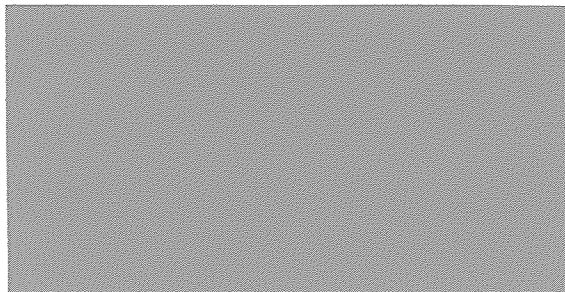


**VISTA PAINT NO. 27- 16541
FZ. 527 MARKET BASKET**

SIDING:



**VISTA PAINT NO. 27- 16533
FZ. 8761W KENNET SQUARE**



**VISTA PAINT NO. 27- 16529
FZ. 8764M LAVA ROCK**



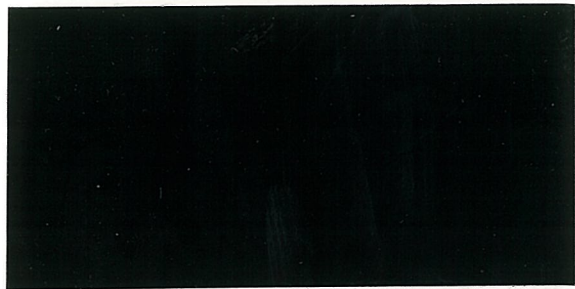
*Eastlake Village
The Shores*

SCHEME 6 CONTINUED

ACCENT:



**VISTA PAINT NO. 27- 16544
FZ. 540 GABLES**



**VISTA PAINT COLOR 05 BLACK
FZ. AC144N BLACK DECO**



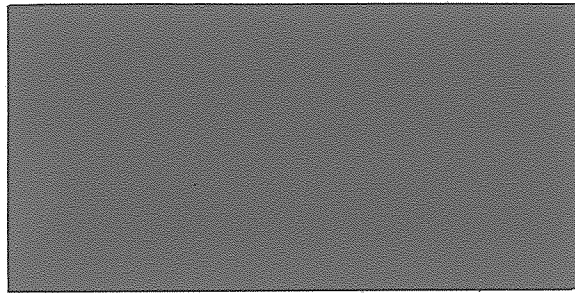
**VISTA PAINT NO. 9975
FZ. CZ-15-17610**



Eastlake Village
The Shores

SCHEME 6 CONTINUED

ACCENT:



47 OLIVE BRANCH



EAST LAKE VILLAGE - THE SHORES

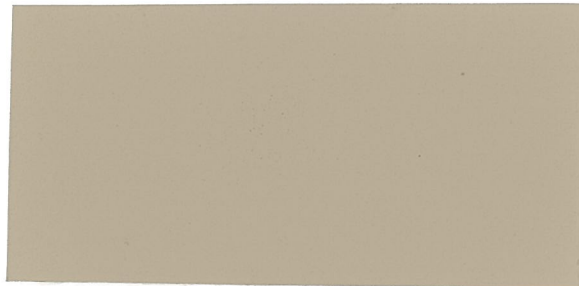
**THIS PAGE INTENTIONALLY LEFT
BLANK**



*Eastlake Village
The Shores*

SCHEME 7

STUCCO:

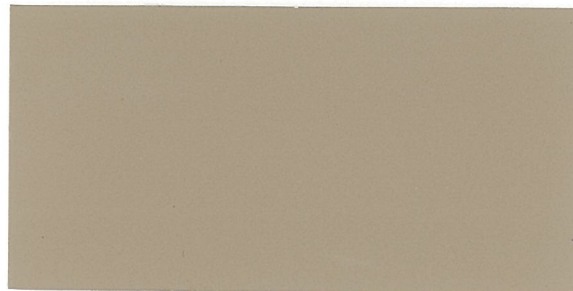


**VISTA PAINT NO. 27- 16528
FZ. 8724M MEADOWLARK**

SIDING:



**VISTA PAINT NO. 27- 16536
FZ. 8722W DESERT CASTLE**



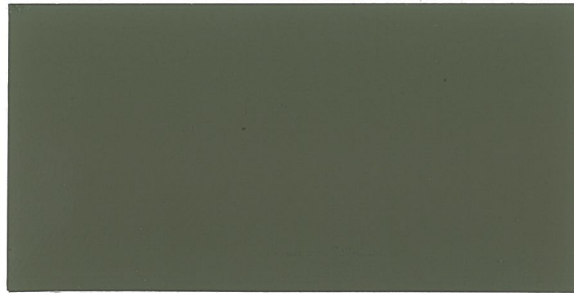
**VISTA PAINT NO. 27- 16531
FZ. 8734M BARK MULCH**



*Eastlake Village
The Shores*

SCHEME 7 CONTINUED

ACCENT:



47 OLIVE BRANCH



***VISTA PAINT COLOR 05 BLACK
FZ. AC144N BLACK DECO***



***VISTA PAINT NO. 9975
FZ. CZ-15-17610***



EAST LAKE VILLAGE - THE SHORES

COLOR SCHEME 8 ELIMINATED

PAGE LEFT BLANK



EAST LAKE VILLAGE - THE SHORES

COLOR SCHEME 8 ELIMINATED

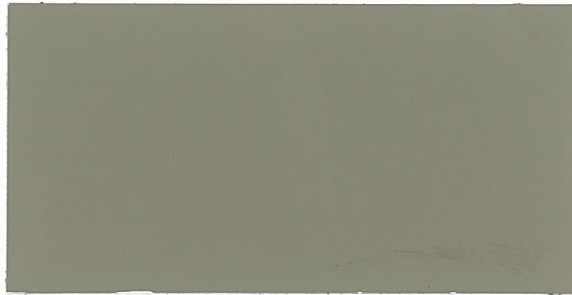
PAGE LEFT BLANK



EAST LAKE VILLAGE SHORES HOA

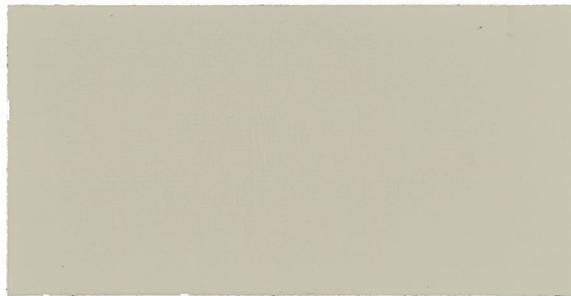
COLOR SCHEME 9

STUCCO:



VISTA PAINT COLOR 8455 TROPICAL TAN

SIDING:



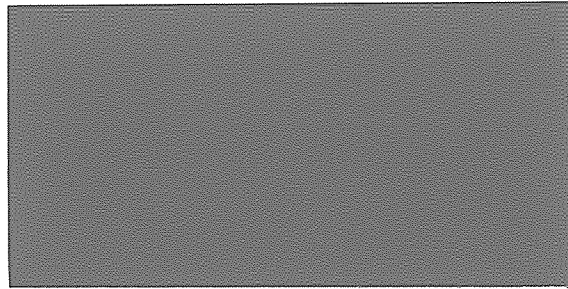
VISTA PAINT COLOR 8457 BAMBOO BEACH



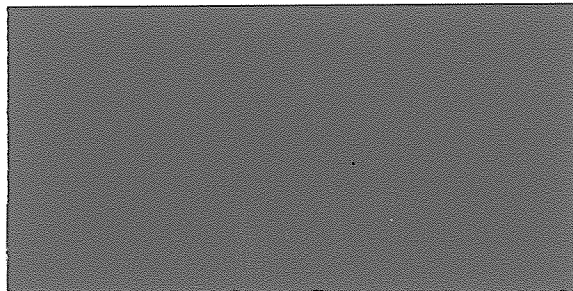
EAST LAKE VILLAGE SHORES HOA

COLOR SCHEME 9 CONTINUED

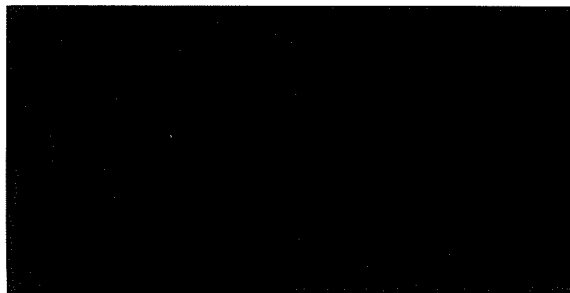
ACCENT:



VISTA PAINT COLOR 8454 CRÈME DEL CAMEL



VISTA PAINT COLOR 47 OLIVE BRANCH



VISTA PAINT COLOR 05 BLACK