

*CASA DE LAGUNA  
WINDOW REPLACEMENTS  
JUNE 2002*

Before replacing windows:

1. Obtain an Architectural Request Form from Total Property Management – 949-261-8282.
2. Submit as required to TPM for forwarding to the Architectural Committee. Wait for approval from the Architectural Committee.

General guidelines:

1. You may not change the size or shape of the windows.
2. No small window panes are allowed.
3. You may have double hung windows or the present slider style.
4. ~~The windows are designed to fit over the existing window frame without breaking the stucco.~~
5. The windows must be made by the approved manufacturer, as shown on the accompanying sheet with the specifications.
6. [REDACTED]

[REDACTED] Home Improvement at 714-731-1070

**WINDOW REPLACEMENT SPECS FOR CASA LAGUNA  
CONDOMINIUMS**

**Quality Assurance**

Must be approved "Energy Star" manufacturer. The Energy Star Label was created by the Environmental Protection Agency (EPA) and the U.S. Department of Energy (DOE).

**Solid Vinyl Windows**

1. Materials: Extruded rigid polyvinyl/chloride (PVC), minimum 0.070 thick.
2. Frame/Sash Depth: 3" minimum
3. Hardware: Manufacturer's standard cam-type sweep locks and keepers. All units shall be lockable.
4. All sliding windows to utilize brass rollers.
5. Weather stripping: Polypropylene fin type weather stripping. All Single Slider frames to have weather stripping throughout the frame and sash.
6. Extruded aluminum stiffeners required on all windows at the meeting rail.
7. Color: True White.
8. Glazing: Minimum 3/4" Insulated Glass, Double Strength, structural foam 'Super-spacer' sealed on all windows.
9. Screening: Rolled or extruded frames with 18 x 16 mesh, 0.013 diameter fiberglass material.
10. Design Criteria: Air infiltration; 0.13 cfm at 1.56 psf, (25 mph). U-Value of 0.34 or better (NFRC Residential AA).
11. Solar Heat Gain Coefficient: 0.32 or lower (AAMA).
12. Water Resistance: No leakage at 2.57 psf.
13. Structural Performance: Minimum R-25 (AAMA).

[REDACTED]

[REDACTED]  
[REDACTED]  
[REDACTED]  
[REDACTED]

[REDACTED] [REDACTED] [REDACTED] [REDACTED]  
[REDACTED] [REDACTED] [REDACTED]

ANLIN INDUSTRIES

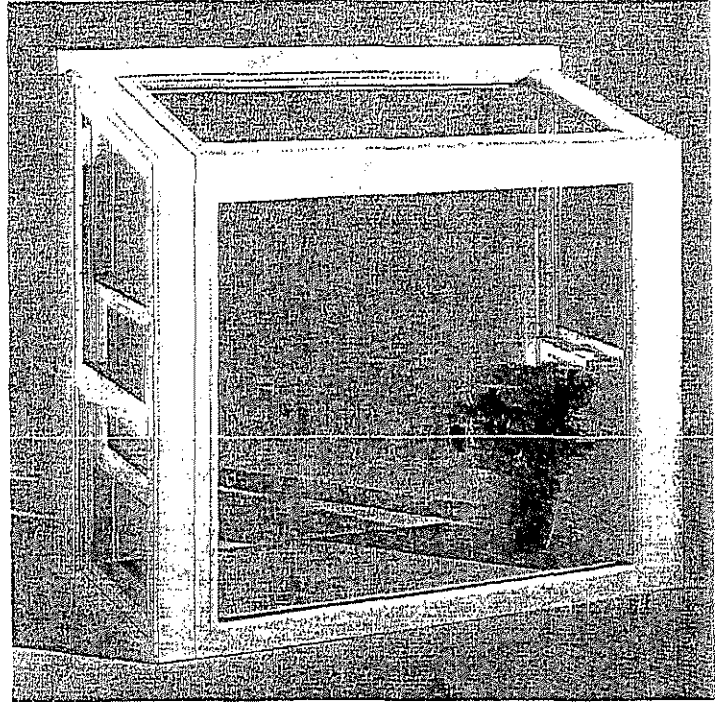
# Anlin Industries Garden Window... Brighten Up Your Home

**NEW!**

Anlin Industries' Garden Window offers all the benefits of vinyl - ease of maintenance and energy efficiency - in an extremely popular specialty style.

The Anlin Industries Garden Window's frame has heavy vinyl walls for strength and multiple, hollow chambers to minimize heat conduction. The weep system is designed to keep water out.

Bring the beauty of a garden into the home, with an Anlin Industries Vinyl Garden Window.



## Standard Configurations

SIZE OPTIONS	
Width	Height
36"	36"
36"	42"
36"	47"
36"	48"
48"	36"
48"	42"
48"	47"
48"	48"

SIZE OPTIONS	
Width	Height
60"	36"
60"	42"
60"	47"
60"	48"
72"	36"
72"	42"
72"	47"
72"	48"

### Quality Features:

- Virtually no maintenance
- Structural Integrity
- Weathertight and thermally proven
- Colors available, almond and white
- Adjustable wire shelf
- Lifetime Limited Warranty

Since 1971

## A-1 ENERGY SOLUTIONS

Factory Direct Prices  
Dual Pane Windows • Heating • A/C

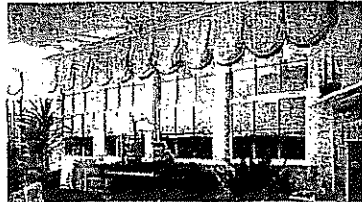
Jeff Edelstein

Marketing Director

(909) 284-4100  
(877) 374-5094  
(909) 284-4102 Fax

169 N. Maple Unit D  
Corona, CA 92980  
Lic #: 270551

## Ice Your Home With New Replacement Windows



## Certified to Meet or Exceed Expectations

All Anlin Window Systems are AAMA, NFRC and Energy Star certified. They meet or exceed stringent rating guidelines, assuring you a lifetime of superior performance and energy savings.



## Our Warranty Says It All

Coronado series vinyl windows are guaranteed for as long as you own your home. Your investment is protected by our Lifetime Limited Warranty that includes non-prorated coverage. For details, ask your dealer for the warranty brochure.



Since 1971

## A-1 ENERGY SOLUTIONS

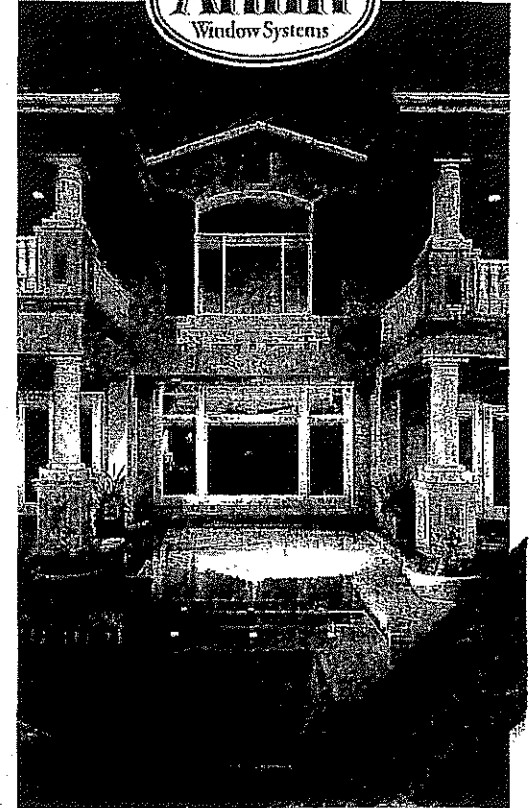
Factory Direct Prices  
Dual Pane Windows • Heating • A/C

Jeff Edelstein

Marketing Director

# CORONADO

SERIES VINYL WINDOWS



COME VISIT OUR 26,000 SQ FOOT  
FACTORY/SHOWROOM  
4100 E. La Palma - ANAHEIM  
714 - 575 - 0088

SHOWROOM HOURS

MONDAY THRU FRIDAY  
9:00 AM to 5:00 PM

SATURDAY  
10:00 AM to 2:00 PM

SUNDAY  
CLOSED

